

ROUTE ASSISTANT GENERAL CHASSIS REQUIREMENTS

FUEL TANK = 50 GALLON MINIMUM UNDER DRIVERS SIDE OF CAB

DEF TANK = 6 GALLON MINIMUM NEXT TO FUEL TANK

EXHAUST = HORIZONTAL EXHAUST OR SYSTEM THAT IS MOUNTED UNDER PASSENGER SIDE STEPS.

AIR TANKS = FRAME MOUNTED

AIR DRYER (IF REQUIRED) = BOC ALONG LEFT FRAME RAIL

BATTERY BOX = FRAME MOUNTED IN A LOCATION THAT DOESN'T INTERFERE WITH EQUIPMENT SHOWN.

LOCKABLE BATTERY SWITCH LOCATED INSIDE CAB OR ON SIDE OF BATTERY BOX

BODY BUILDER CONNECTOR TO INCLUDE REMOTE THROTTLE CONNECTIONS AND REMOTE TRANSMISSION CONNECTIONS TO WIRES 130, 143 AND 145. THESE CONNECTIONS CAN BE UNDER BACK OF CAB, BEHIND BACK OF CAB, IN ENGINE BAY OR INSIDE DASH.

GRAB HANDLES ON B PILLARS

RA MINIMUM CHASSIS REQUIREMENTS

BODY STYLE = CONVENTIONAL CAB
CAB TO AXLE = 209" for 20' BODY WITH SINGLE REAR AXLE

FRONT AXLE RATING = 14,000 LBS.

REAR AXLE RATING = 23,000 LBS.

GVW RATING = 37,000 LBS.

FRAME = 1,800,000 RBM

FRAME THICKNESS = 11/32" MINIMUM

ENGINE = 240 HP DIESEL

TRANSMISSION = ALLISON 3500 RDS WITH PTO PROVISION WITH 168.

*NO TRANS MOUNTED COOLER OR RETARDER - THESE OPTIONS WILL PROMPT A PTO UPCHARGE.

DEVIATIONS FROM THIS LAYOUT COULD RESULT IN ADDITIONAL CHARGES AND/OR DELAYS IN PRODUCTION .

PETERSEN INDUSTRIES INC.
4000 S.R. 60 WEST
LAKE WALES, FL. 33859-8234
TEL: (863) 676-1493 FAX: (863) 676-6844

TITLE: NON-BRAND SPECIFIC RA CHASSIS SINGLE AXLE

PART NUMBER:

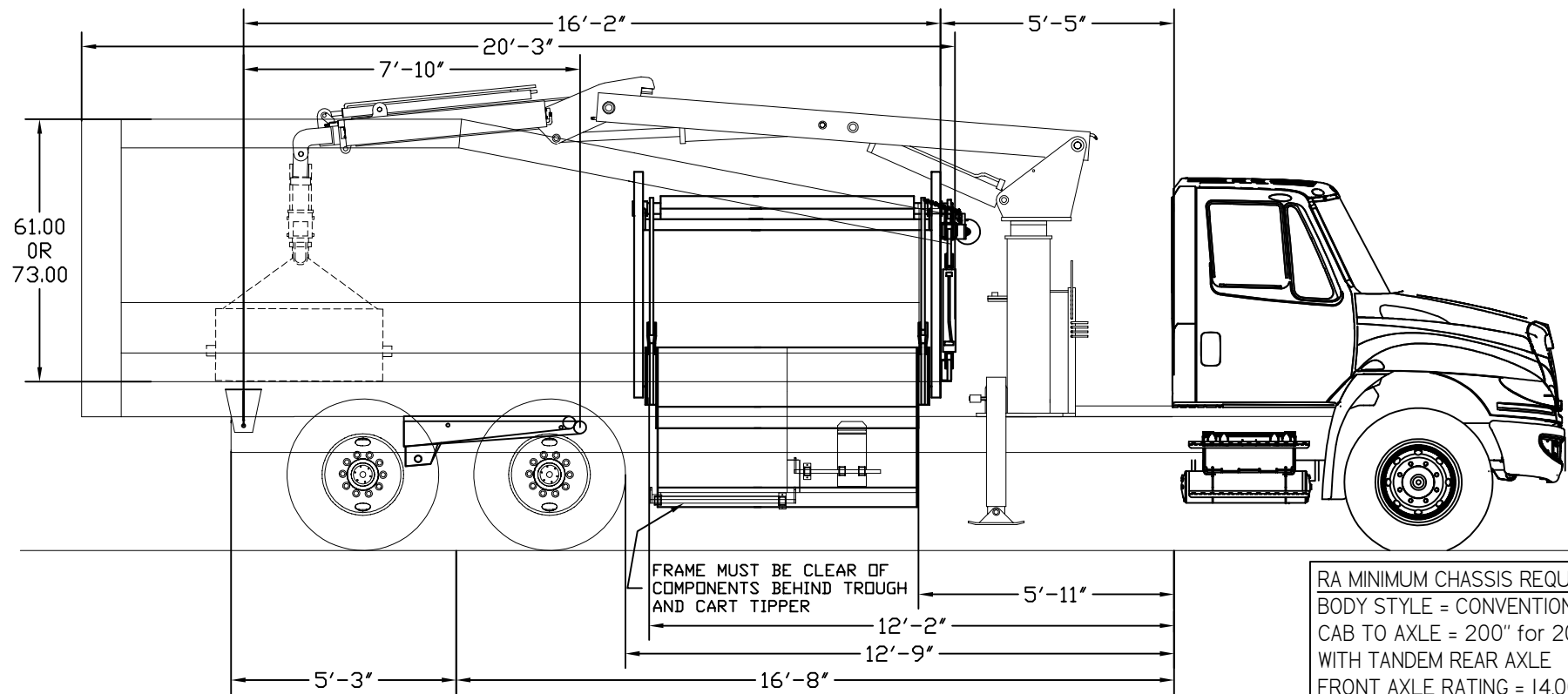
SCALE: NA

DRAWN BY: JAC

APPROVED BY:

DATE: 4/14/21


SHEET: 1 OF 1



ROUTE ASSISTANT GENERAL CHASSIS REQUIREMENTS
 FUEL TANK = 50 GALLON MINIMUM UNDER DRIVERS SIDE OF CAB
 DEF TANK = 6 GALLON MINIMUM NEXT TO FUEL TANK
 EXHAUST = HORIZONTAL EXHAUST OR SYSTEM THAT IS MOUNTED UNDER PASSENGER SIDE STEPS.
 AIR TANKS = FRAME MOUNTED
 AIR DRYER (IF REQUIRED) = BOC ALONG LEFT FRAME RAIL
 BATTERY BOX = FRAME MOUNTED IN A LOCATION THAT DOESN'T INTERFERE WITH EQUIPMENT SHOWN.
 LOCKABLE BATTERY SWITCH LOCATED INSIDE CAB OR ON SIDE OF BATTERY BOX
 BODY BUILDER CONNECTOR TO INCLUDE REMOTE THROTTLE CONNECTIONS AND REMOTE TRANSMISSION CONNECTIONS TO WIRES 130, 143 AND 145. THESE CONNECTIONS CAN BE UNDER BACK OF CAB, BEHIND BACK OF CAB, IN ENGINE BAY OR INSIDE DASH.
 GRAB HANDLES ON B PILLARS

RA MINIMUM CHASSIS REQUIREMENTS
 BODY STYLE = CONVENTIONAL CAB
 CAB TO AXLE = 200" for 20' BODY WITH TANDEM REAR AXLE
 FRONT AXLE RATING = 14,000 LBS.
 REAR AXLE RATING = 25,000 LBS.
 GVW RATING = 39,000 LBS.
 FRAME = 1,800,000 RBM
 FRAME THICKNESS = 11/32" MINIMUM
 ENGINE = 240 HP DIESEL
 TRANSMISSION = ALLISON 3500 RDS WITH PTO PROVISION WITH 168.
 *NO TRANS MOUNTED COOLER OR RETARDER - THESE OPTIONS WILL PROMPT A PTO UPCHARGE.

DEVIATIONS FROM THIS LAYOUT COULD RESULT IN ADDITIONAL CHARGES AND/OR DELAYS IN PRODUCTION .

		PETERSEN INDUSTRIES INC. 4000 S.R. 60 WEST LAKE WALES, FL. 33859-8234 TEL: (863) 676-1493 FAX: (863) 676-6844	
TITLE: NON-BRAND SPECIFIC RA CHASSIS TANDEM AXLE			
PART NUMBER:			SCALE: NA
DRAWN BY: JAC	APPROVED BY:	DATE: 4/14/21	SHEET: 1 OF 1